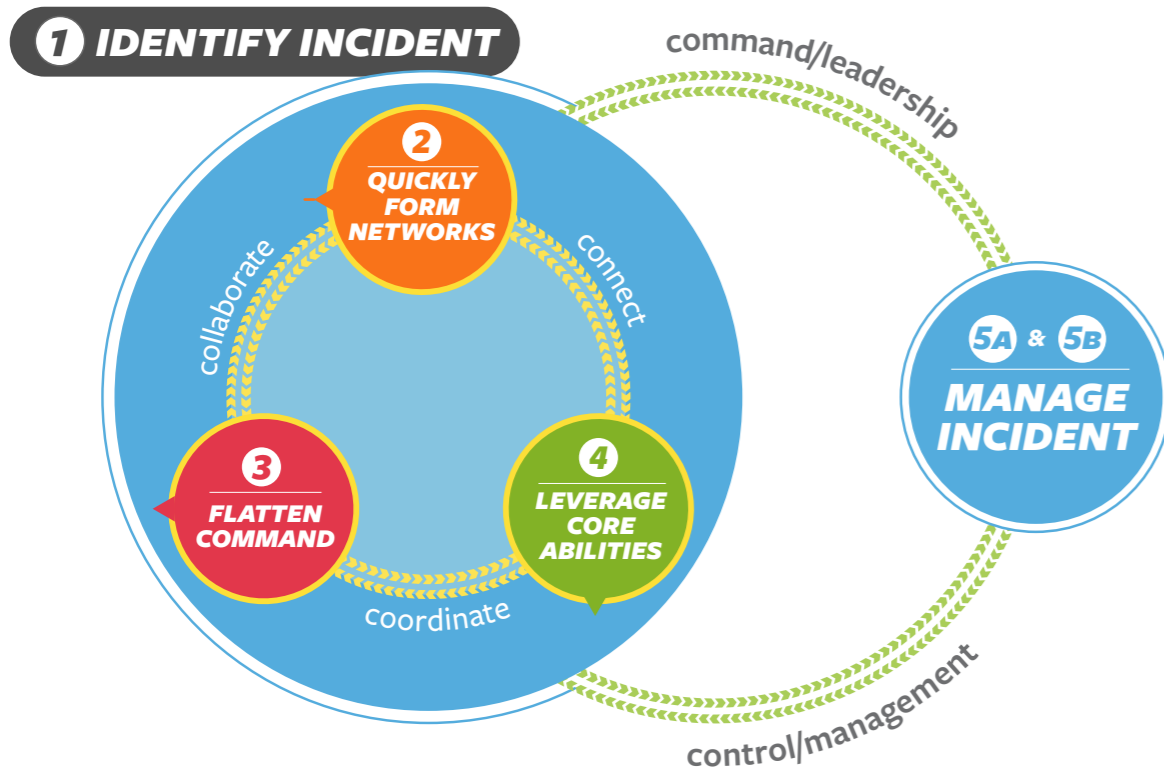


# Crisis Leadership Canvas for COVID-19

by Aric Williamson, Rachel Oftedahl MFA and the Care Collaboratory



## WHOM IS IT FOR?

This template is intended for use mainly by healthcare leaders, whether administrators or physicians, to coordinate resources and plans across agencies to better lead during this pandemic and in future crises.

## WHY IS IT RELEVANT?

The COVID-19 pandemic has exposed various weaknesses in areas of public health leadership- specifically, the difficulties and often inability for multiple large agencies to collaborate and organize resources quickly and effectively.

## A Template for Leaders During Catastrophic Events

This template is intended to guide leaders in navigating the complex web of relationships that necessarily exist while managing complex and catastrophic incidents.

Leaders of smaller crises typically use a simple command-and-control (simple, top-down) hierarchical structure. However, in extreme events this type of strategy is inadequate and may even hinder inter-organizational response. Here we designed a framework to allow multiple agencies, each with their own top-down structure, to cooperate.

## WHAT IS NEEDED TO IMPLEMENT THE IDEA?

This template can be accessed and distributed to anyone with an Internet connection, just click the link on the second page to access the pdf on Google drive.

The template can then be printed and used in various manners depending on need. Based on preliminary feedback, it may be useful to print template on larger poster paper to avoid a cluttered page.

As the template is currently only available in English, individuals with multilingual backgrounds involving English may be necessary for utilization of this template outside of English-speaking contexts.

The template is organized as follows:

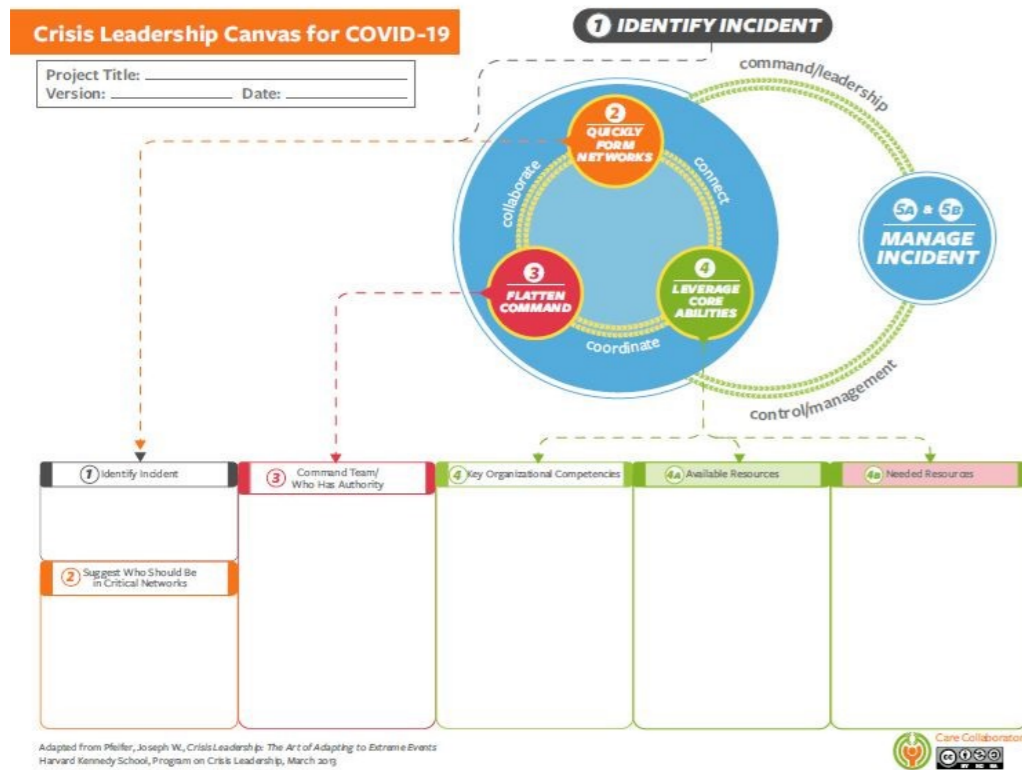
Once a crisis is identified (Step 1), a leader needs to figure out who should be in the critical networks to solve it (Step 2). Once these groups are decided, command needs to be flattened to allow a representative from each group to provide input (Step 3). These inputs should reflect the unique core abilities of each group which should be identified (Step 4) and deployed to manage the incident (Step 5).

The second and third pages break down the process by which smaller incidents are managed in the context of the larger crisis (Steps 5A and 5B).

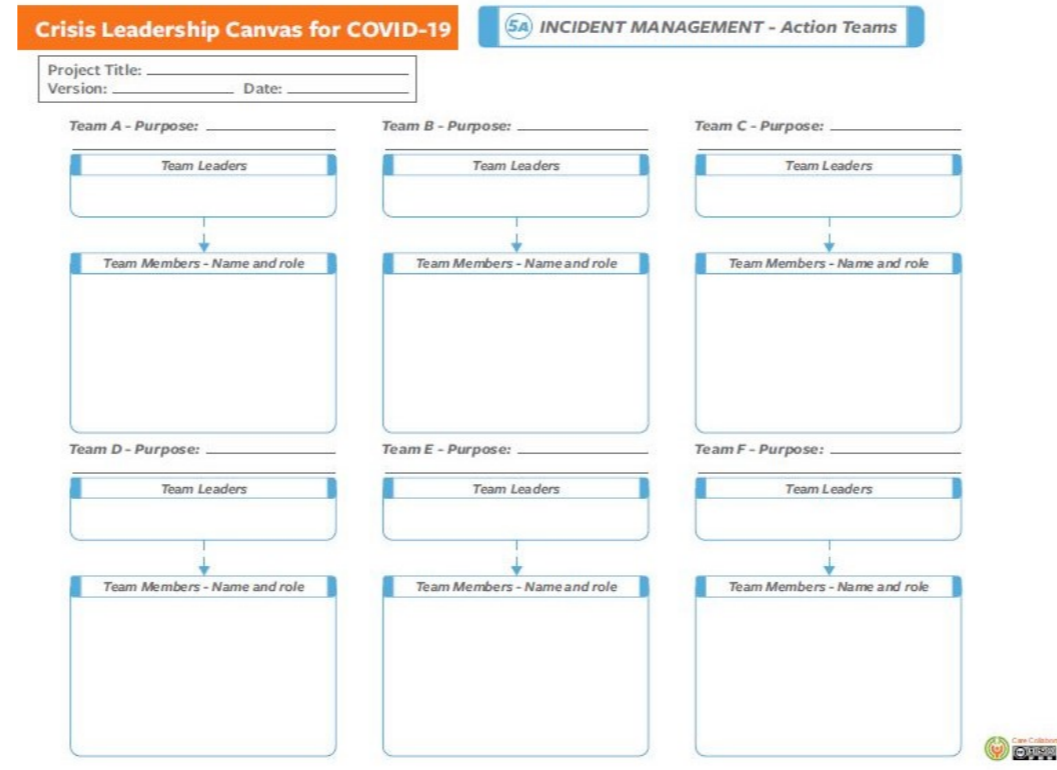
## WHO CAN CONTRIBUTE?

This template is open for input from any individual or organization that observes a need and puts it to use. The template can be modified to accommodate specific situations as the user sees fit, and specific recommendations can be made to Aric Williamson (aricwilliamson@gmail.com).

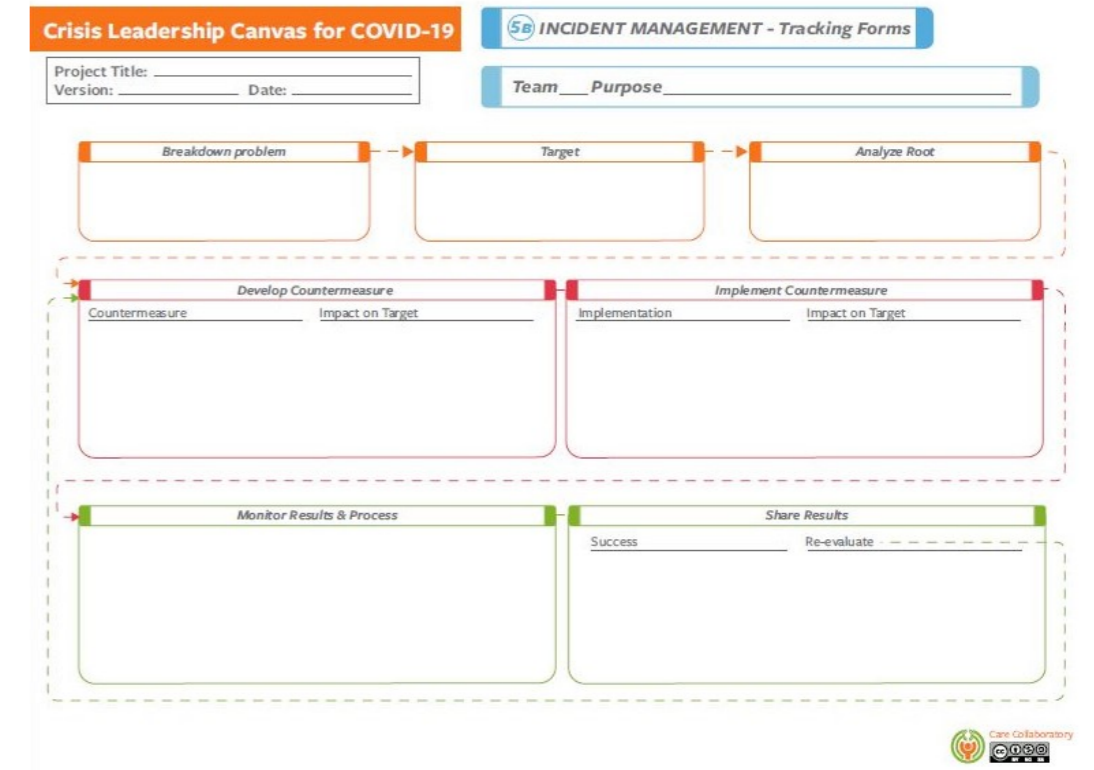
# Crisis Leadership Canvas for COVID-19



Template Page 1



Template Page 2



Template Page 3

Google Drive Link - [Click Here](#)

**Contacts:**  
Aric Williamson - aricwilliamson@gmail.com  
Care Collaboratory - <https://carecollaboratory.org/>

